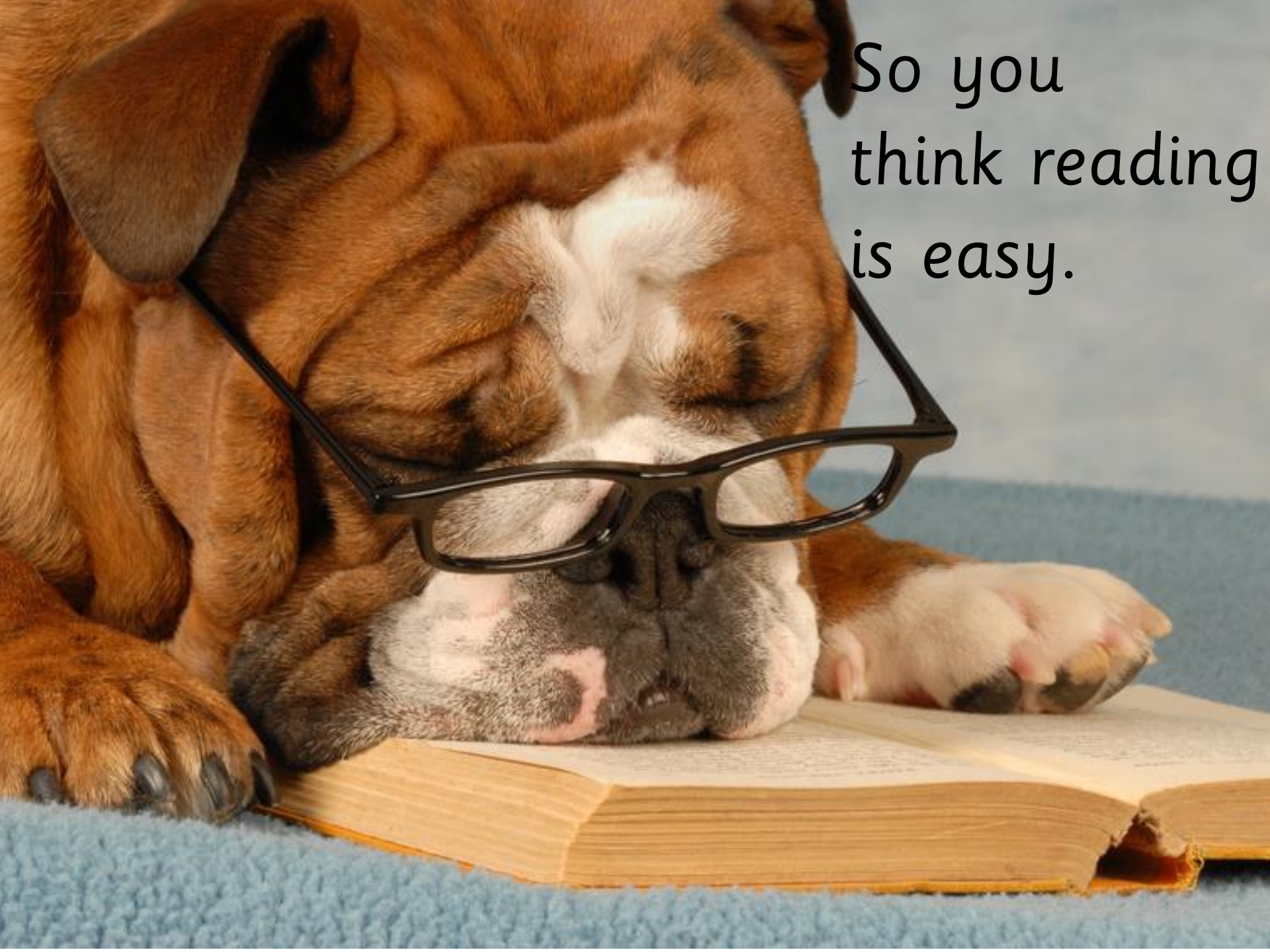


So you
think reading
is easy.



What do we do when we read?

Make connections with what we already know. Bring together our existing knowledge, understanding and personal responses to a new text.



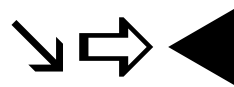
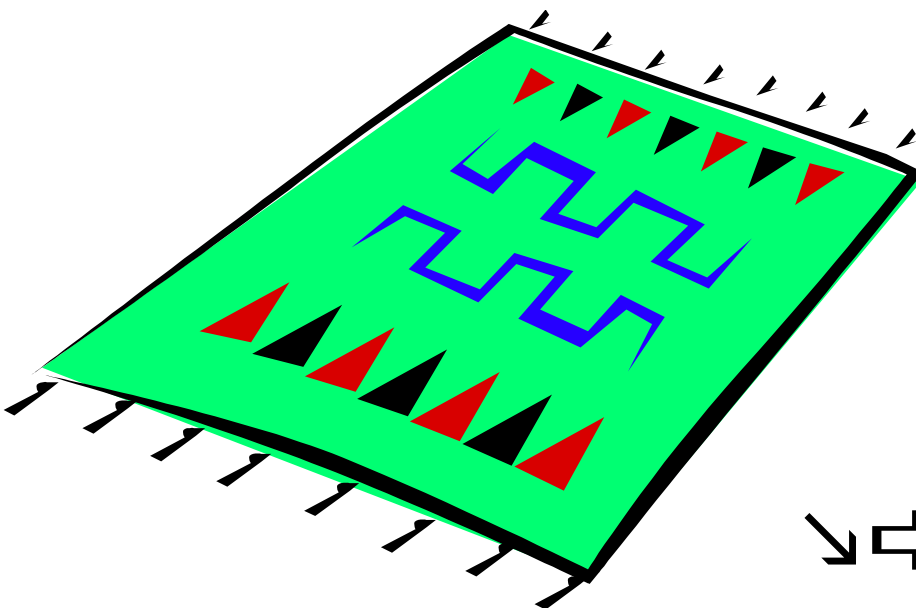
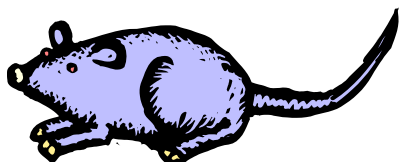
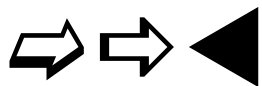
Understand the text. Know what the individual words and the whole text means.

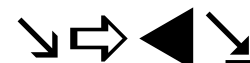
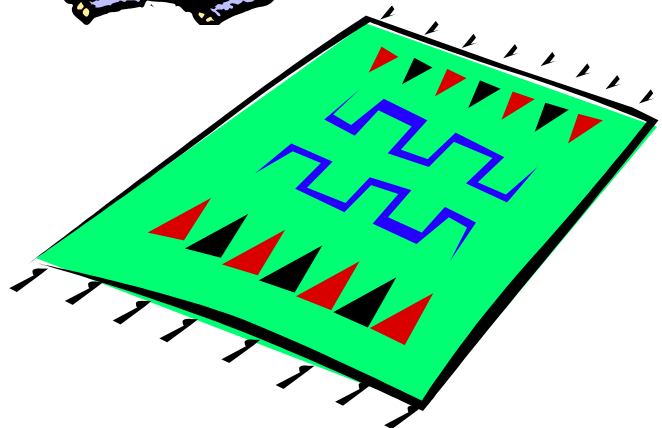
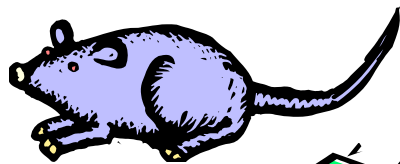
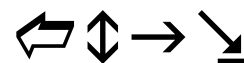
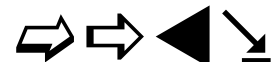
Make a personal response. Consider:
How does this text make us feel?
What does it remind us of?

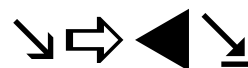
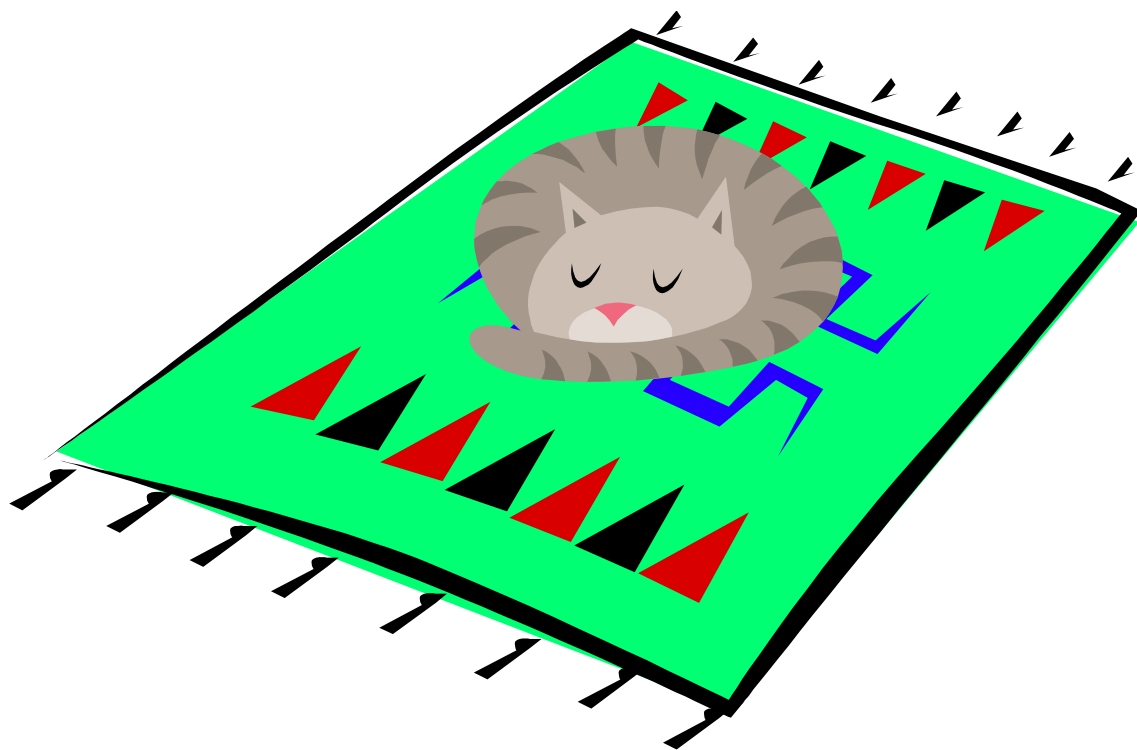
Blend the letter sounds together to read the words.

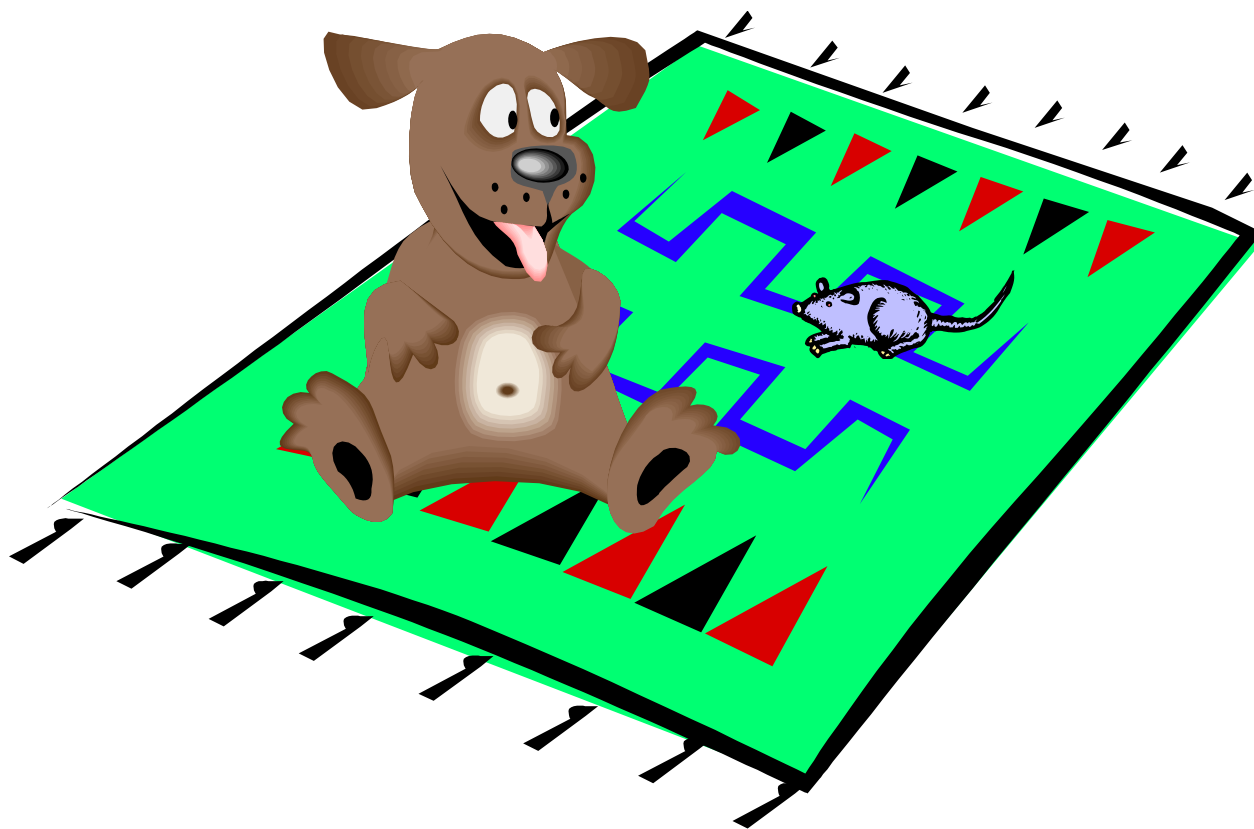
Consider whether we like or dislike the text.
Do we think it is a good read?

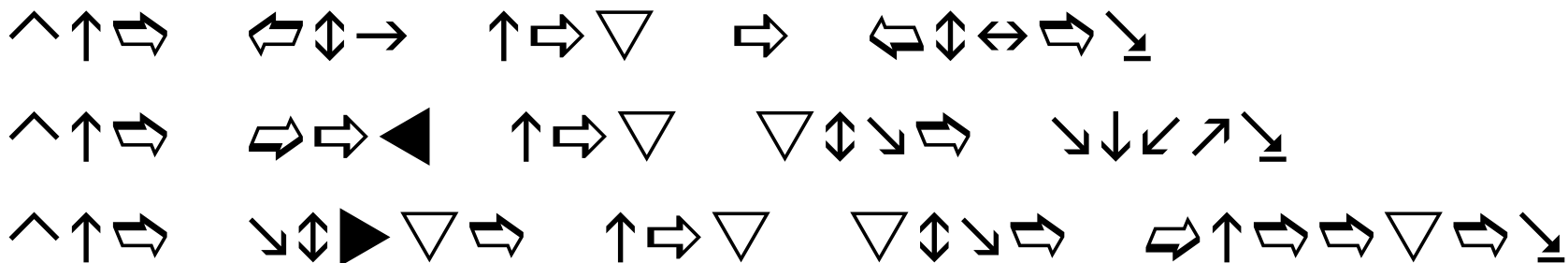
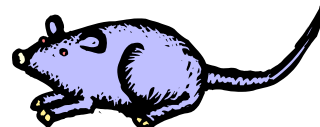
Engage with the text. 'See' the images that the words create, feel the emotions that the text evokes.

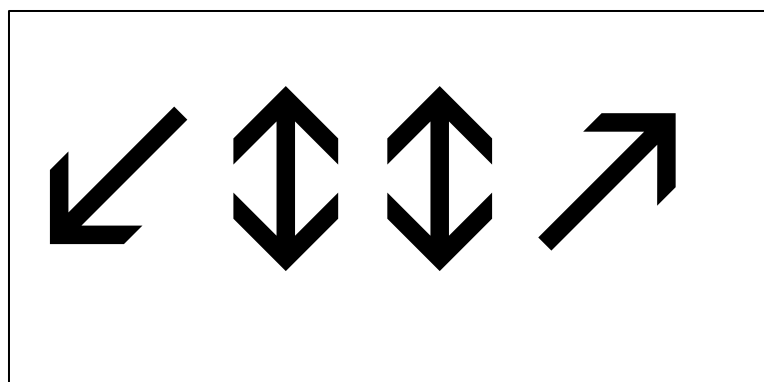
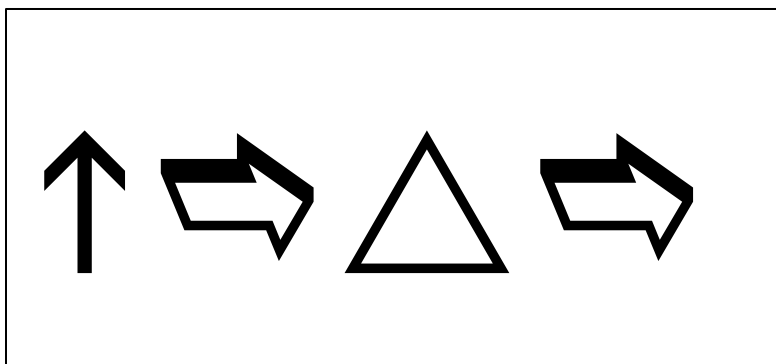


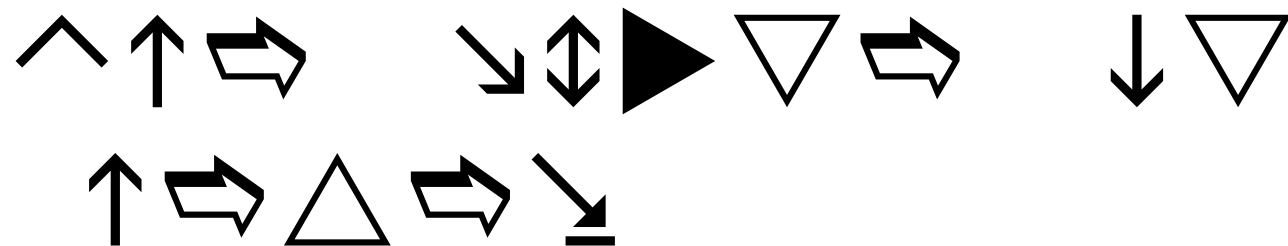
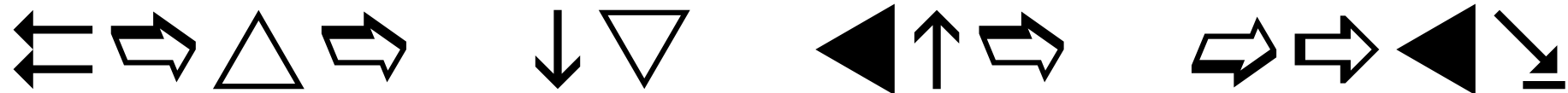


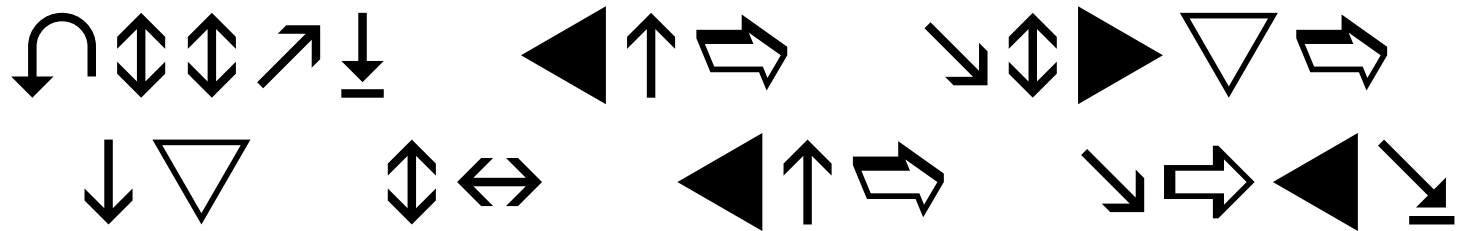
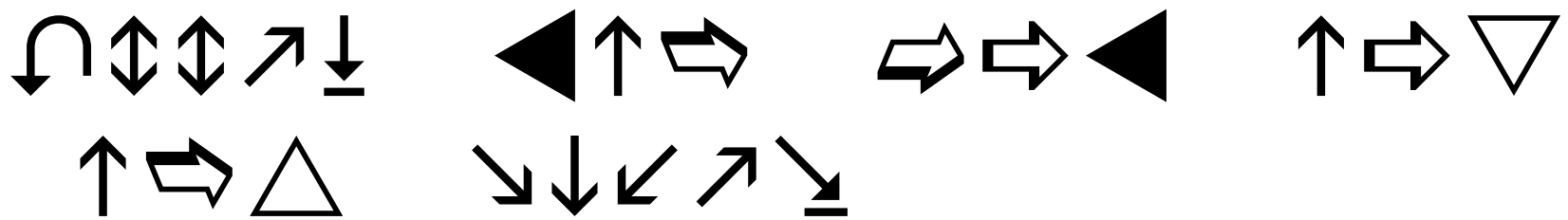
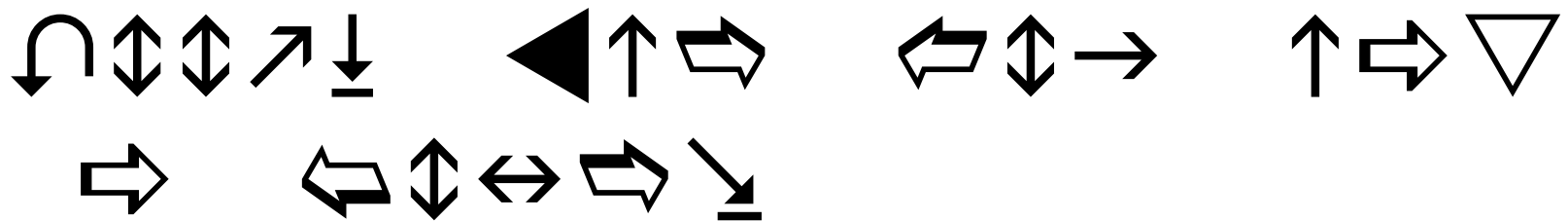






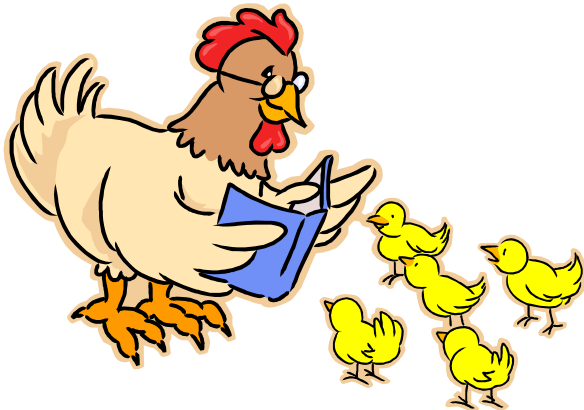








How easy
was that?



Olly srmst poelpe can raed this. It is hrad to
blveiee taht you can aulacity uesdnatnrd waht you
are rdanieg. The phaonmaneel pweor of the
hmuan mnid, aoccdrnig to rseeacrh at Cambrigde
Uinervtisy, maens it deosn't mttae in waht oredr
the ltteers in a wrod are. The olly iprmoatnt tihgn
is taht the frist and lsat ltteer be in the rghit pclae.
The rset can be a taotl mses and you can slitl raed
it wouthit a porbelm. This is bcuseae the hmuan
mnid deos not raed ervey lteter by istlef, but the
wrod as a wlohe. Amzanig, and we are awlyas
bnagnig on aobut the ipomoracne of slpeling!!